

**El Paso  
Metropolitan Planning Organization**

**TRANSPORTATION POLICY BOARD AGENDA ITEM SUMMARY**

**January 24, 2025**

---

**AGENDA ITEM NO. 8:**

Consider approval for MPO staff to submit a functional classification request to the State of New Mexico and Federal Highway Administration for the Border Highway Connector roadway as a Principal Arterial.

**RECOMMENDED MOTION:**

Approve allowing MPO staff to submit a functional classification request to the State of New Mexico and Federal Highway Administration for the Border Highway Connector roadway as a Principal Arterial.

**SUPPORT INFORMATION:**

- Presentation
- Draft Functional Classification Request Form

**DISCUSSION/OPTIONS:**

In the United States, roadways are classified by the states in conjunction with Federal Highway Administration guidance based on their purpose and function into arterial, collector, and local categories. This functional classification carries with it expectations about roadway design, including speed, capacity and relationship to existing and future land use development. It also determines whether roadways are eligible for federal funding and ensures consistency across agencies and states in how roads are designed and used. All proposed roads must receive functional classification determinations prior to their inclusion in the MPO's fiscally-constrained short-term transportation plan known as the Transportation Improvement Program (TIP). For more detailed information about how roadways are classified and about the different characteristics of arterials, collectors, and local streets, the FHWA offers this guide: <https://www.fhwa.dot.gov/planning/processes/statewide/related/hwy-functional-classification-2023.pdf>

The Border Highway Connector Project is proposed to be classified as a principal arterial as outlined in the Functional Classification Application.



# Federal Functional Classification System Request

---

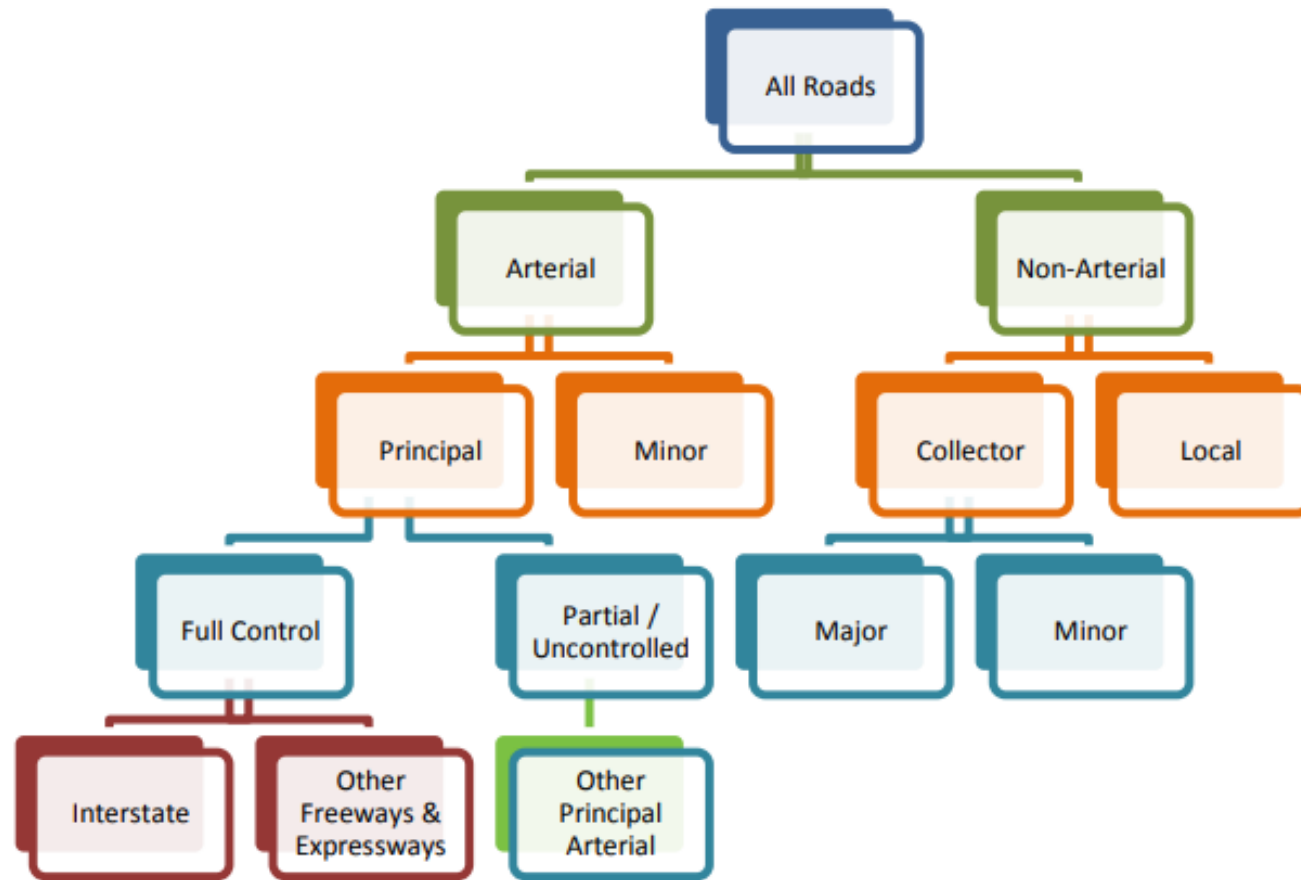
**Transportation Policy Board**

January 24, 2025

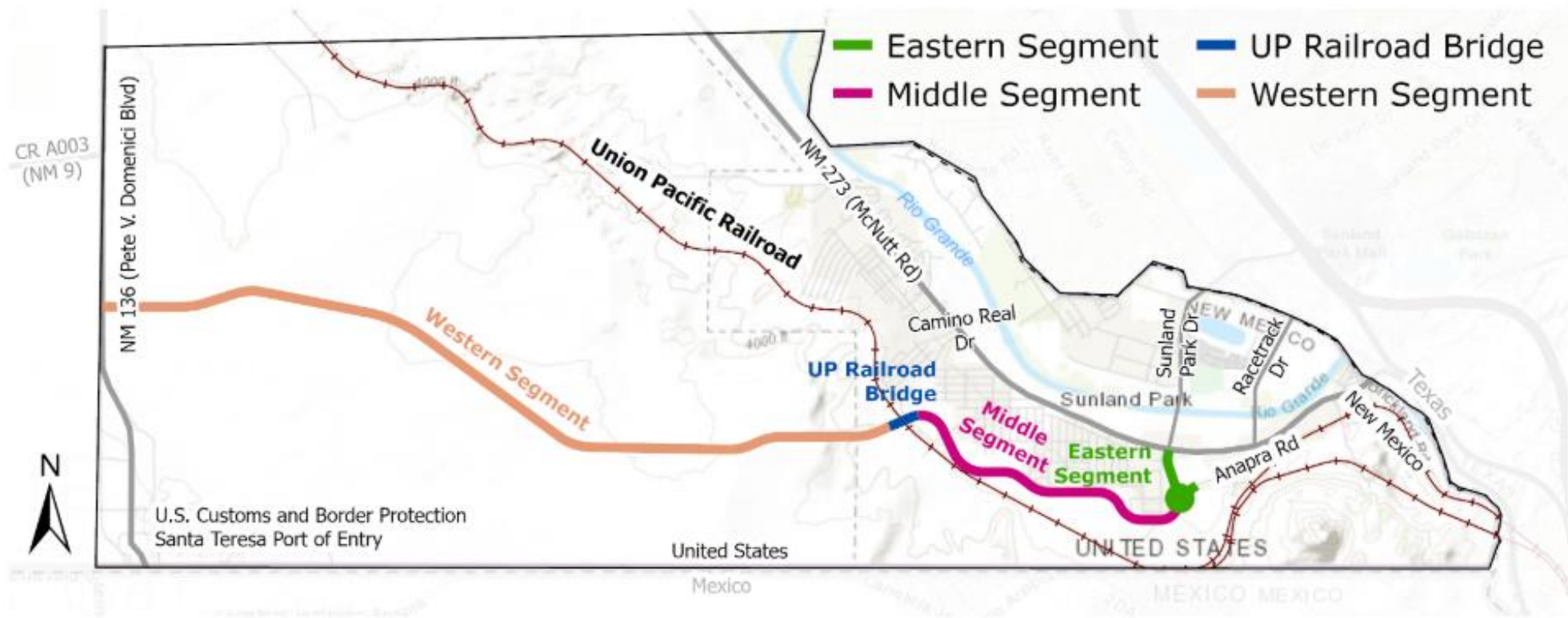
# What is Functional Classification?

- The functional classification of roadways defined the role each element of the roadway network plays in serving travel needs.
- Functional Classification categorizes roadways by their relative purpose. Typically comparing importance of traffic mobility to property access.
- Functional classification categories:
  - Interstate
  - Freeways & Expressways
  - Principal Arterial
  - Minor Arterial
  - Major Collector
  - Minor Collector
  - Local

# Federal Functional Classification Decision Tree



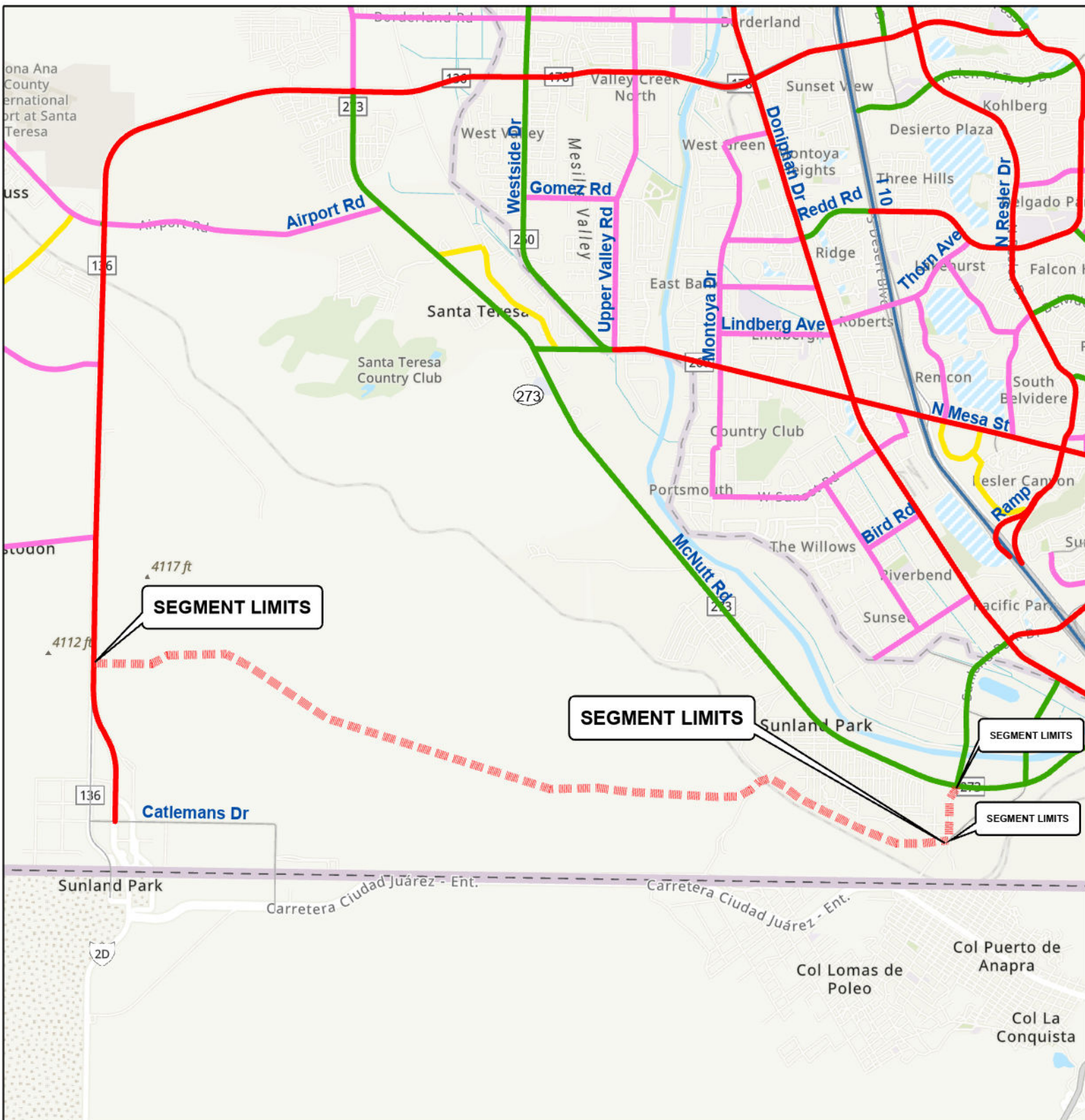
Source: FHWA and CDM Smith



# List of Functional Classification (FC) requested

Facility	From	To	Old FC	New FC	Mileage	Reason
<b>Border Highway Connector</b>	NM 136	Anapra Rd.	Unclassified	Principal Arterial	7.27	Proposed 4-lane roadway will improve connectivity between the Santa Teresa POE on NM 136 to the City of Sunland Park and beyond regional destinations.
<b>Posey Rd. (Proposed eastern segment of Border Highway Connector)</b>	Anapra Rd.	NM 276 (McNutt Rd)	Local road	Principal Arterial	0.46	Proposed 4-lane roadway will enhance safe and efficient multimodal transportation, serving truck and through traffic.





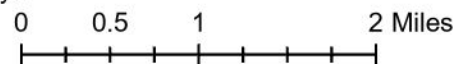
## Functional Classification Change Request

### Classification Category

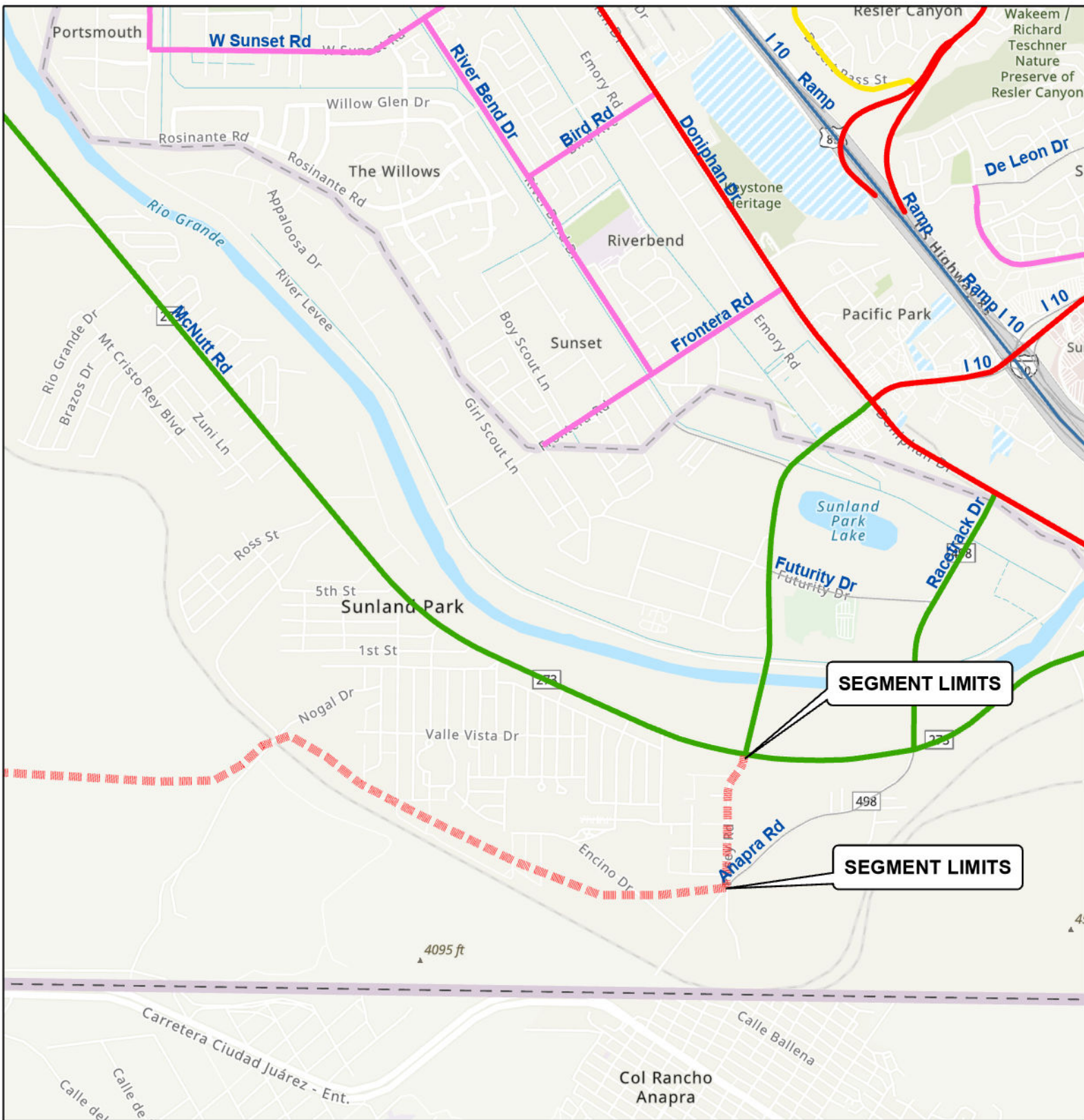
- Interstate
- Minor Collectors
- Major Collectors
- Minor Arterial
- Principal Arterial
- Freeways and Expressways

- - - - Proposed Classification Change Minor Collector
- - - - Proposed Classification Change Major Collector
- - - - Proposed Classification Change Minor Arterial
- - - - Proposed Classification Change Principal Arterial
- - - - Proposed Classification Change Expressways
- Existing Major Thoroughfare

- MPO Boundary 2015
- 2010 Adjusted Urbanized Area
- Fort Bliss







## Functional Classification Change Request

### Classification Category

- Interstate
- Minor Collectors
- Major Collectors
- Minor Arterial
- Principal Arterial
- Freeways and Expressways

- Proposed Classification Change Minor Collector
- Proposed Classification Change Major Collector
- Proposed Classification Change Minor Arterial
- Proposed Classification Change Principal Arterial
- Proposed Classification Change Expressways
- Existing Major Thoroughfare

- MPO Boundary 2015
- 2010 Adjusted Urbanized Area
- Fort Bliss



0 0.23 0.45 0.9 Miles





# Request for Change of Roadway Functional Classification

---

## Part 1: NMDOT District Staff or Local Government Representative

Part 1 of this form should be filled out by NMDOT District staff for state-owned roadways, and by a tribal/local public agency (T/LPA) representative for all other roadways.

Refer to the following guidance documents for information about factors that can justify a change of functional classification (ctrl+click to follow links).

- [NMDOT Functional Classification System Guide](#)
  - [FHWA Highway Functional Classification Concepts, Criteria and Procedures 2023 Edition](#)
- 

### Requested Change Information:

Roadway Name:

NMDOT Route ID (viewable on [this map](#)):

Current Functional Classification:

Requested Functional Classification:

Start and End Point (provide as mile markers, intersections, or latitude/longitude in decimal degrees):

---

### Required Attachments:

Written description of the changes to the roadway that justify the requested change to functional classification

Supporting documents showing changes to the roadway that justify the requested change to functional classification

Map showing the area of the requested change

---

### Requestor Contact Information:

Name:

Title:

Email:

Organization:

Phone Number:

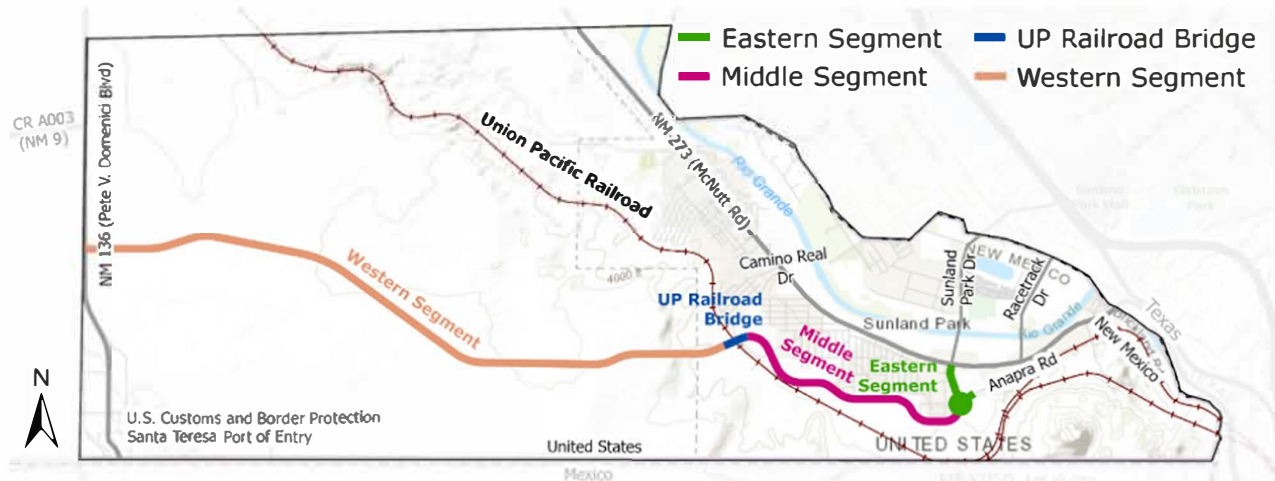
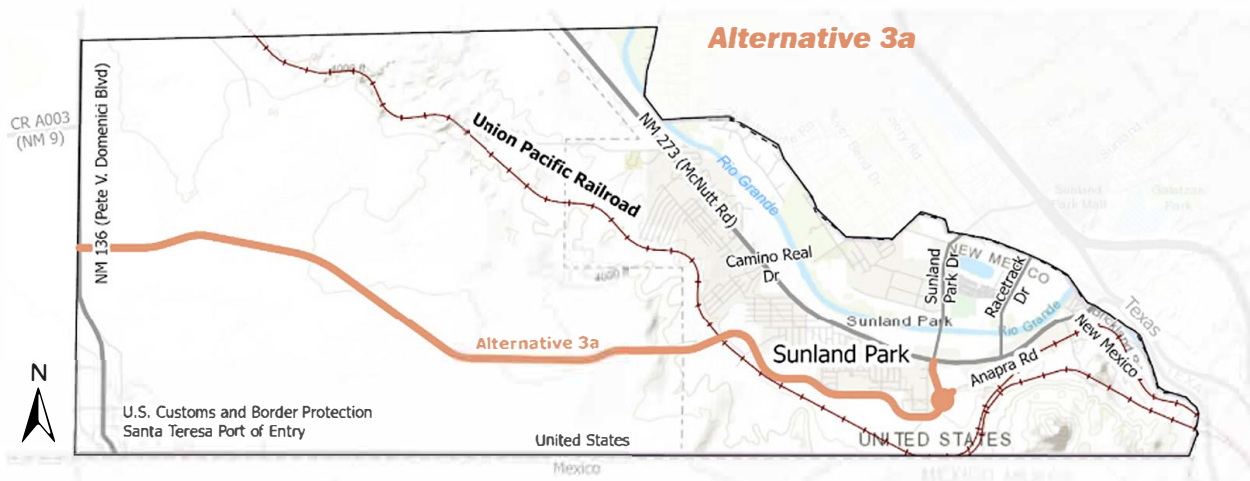
---

After completing this form, please send completed form and all supporting documents to NMDOT Roadway Classification Manager ([contact info here](#)). Completion of this application does not guarantee approval of requested changes by NMDOT or by FHWA.

Requestor Signature:

Date Sent to NMDOT:

Functional Classification Change Request Form			
<b>Sponsored by</b>	NMDOT		
<b>Contact:</b>	<b>Name:</b> Andreas Linnan	<b>Email:</b> andreas.linnan@dot.nm.gov	<b>Phone:</b> (575) 640-7077
<b>Date</b>	Date: January 7, 2024		
<b>Street Name</b>	Posey Rd.		
	Current Functional Classification (e.g., Interstate, Minor Collector, Minor Arterial, etc.): Local Road	Proposed Functional Classification: Principal Arterial	
Is the street included in the latest long range transportation metropolitan plan (MTP)?/Forecast year?:	Currently programmed in the RMS 2050 MTP under project IDs: A606X (CN E100391) in forecast year 2032.		
<b>Route Description</b> (entire route)	4-lane NM State Highway connection from Anapra Rd to NM 273, eastern segment of the Border Highway Connector		
<b>Termini of segment(s) proposed for reclassification</b> (acceptable termini include intersections, interchanges, and in rare cases adjusted urbanized area boundaries):	From NM 498 (Anapra Rd) to NM 273 MP 1.49 (Sunland Park Dr./ McNutt Rd. intersection)		
<b>Estimated length of segments proposed for reclassification:</b> (to the nearest thousandth of a mile)	0.46 miles		
<b>Reason for requested change:</b>	Proposed roadway that will enhance safe and efficient multi-modal transportation.		
	Land Use Along Route: Primarily Vacant/Undeveloped	Characteristics of Traffic Served: Will served truck and through traffic.	
<b>Ownership and Maintenance</b> (responsible entity)	Ownership: New Mexico Border Authority (NMBA) New Mexico Department of Transportation (NMDOT)	Maintenance: New Mexico Border Authority (NMBA) New Mexico Department of Transportation (NMDOT)	
<b>Traffic Count &amp; Traffic Year</b>	Traffic Count: Forecast Traffic: 5,158	Traffic Year: Forecast Yr: 2032 from RMS2050 TDM	







## Functional Classification Change Request

### Classification Category

- Interstate
- Minor Collectors
- Major Collectors
- Minor Arterial
- Principal Arterial
- Freeways and Expressways

- - - - Proposed Classification Change Minor Collector
- - - - Proposed Classification Change Major Collector
- - - - Proposed Classification Change Minor Arterial
- - - - Proposed Classification Change Principal Arterial
- - - - Proposed Classification Change Expressways
- Existing Major Thoroughfare

- MPO Boundary 2015
- 2010 Adjusted Urbanized Area
- Fort Bliss



0 0.13 0.25 0.5 Miles





# Request for Change of Roadway Functional Classification

---

## Part 1: NMDOT District Staff or Local Government Representative

Part 1 of this form should be filled out by NMDOT District staff for state-owned roadways, and by a tribal/local public agency (T/LPA) representative for all other roadways.

Refer to the following guidance documents for information about factors that can justify a change of functional classification (ctrl+click to follow links).

- [NMDOT Functional Classification System Guide](#)
  - [FHWA Highway Functional Classification Concepts, Criteria and Procedures 2023 Edition](#)
- 

### Requested Change Information:

Roadway Name:

NMDOT Route ID (viewable on [this map](#)):

Current Functional Classification:

Requested Functional Classification:

Start and End Point (provide as mile markers, intersections, or latitude/longitude in decimal degrees):

---

### Required Attachments:

Written description of the changes to the roadway that justify the requested change to functional classification

Supporting documents showing changes to the roadway that justify the requested change to functional classification

Map showing the area of the requested change

---

### Requestor Contact Information:

Name:

Title:

Email:

Organization:

Phone Number:

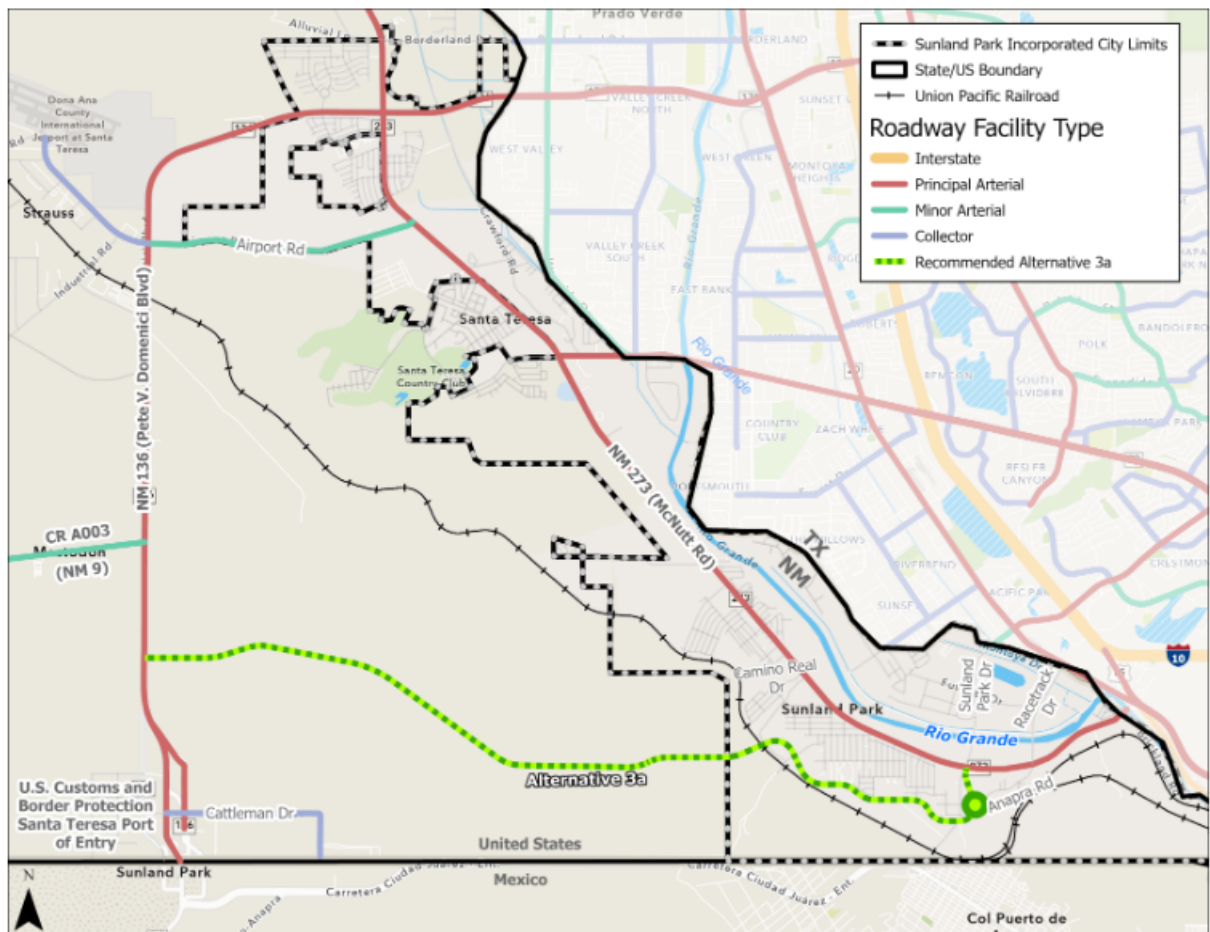
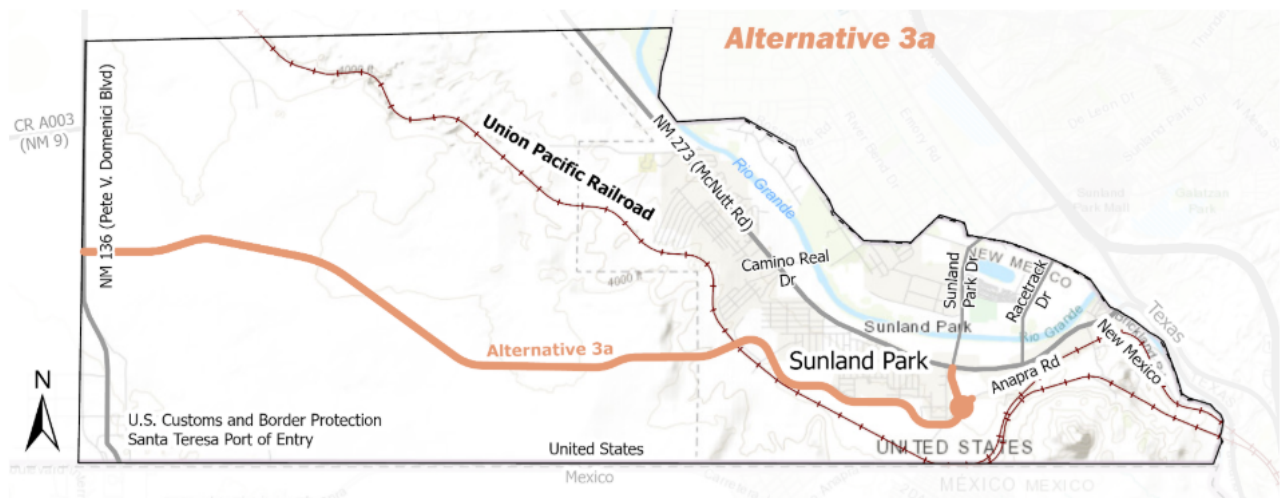
---

After completing this form, please send completed form and all supporting documents to NMDOT Roadway Classification Manager ([contact info here](#)). Completion of this application does not guarantee approval of requested changes by NMDOT or by FHWA.

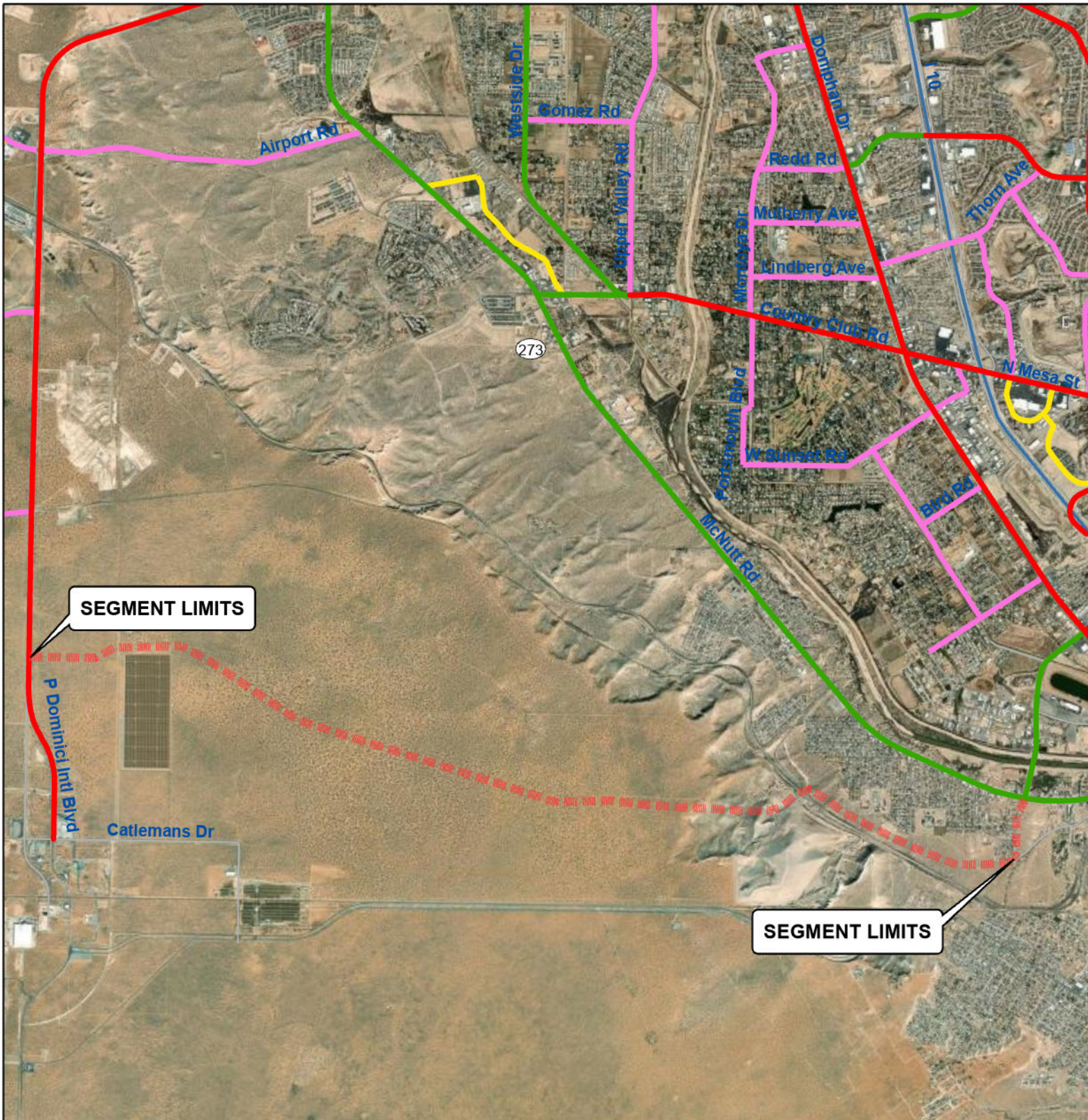
Requestor Signature:

Date Sent to NMDOT:

Functional Classification Change Request Form			
<b>Sponsored by</b>	NMDOT		
<b>Contact:</b>	<b>Name:</b> Andreas Linnan	<b>Email:</b> andreas.linnan@dot.nm.gov	<b>Phone:</b> (575) 640-7077
<b>Date</b>	Revision Date: December,2024		
<b>Street Name</b>	Border Highway Connector (BHC)		
	Current Functional Classification (e.g., Interstate, Minor Collector, Minor Arterial, etc.): <b>New Location</b>	Proposed Functional Classification: Principal Arterial	
Is the street included in the latest long range transportation metropolitan plan (MTP)?/Forecast year?:	Currently programmed in the RMS 2050 MTP under project IDs: A606X (CN E100391) in forecast year 2032.		
<b>Route Description</b> (entire route)	New 4 lane NM State Highway connection from NM 136 ( Peter V. Domenici Blvd.) to NM 273 (McNutt Rd.)		
<b>Termini of segment(s) proposed for reclassification</b> (acceptable termini include intersections, interchanges, and in rare cases adjusted urbanized area boundaries):	NM 136 ( Peter V. Domenici Blvd) to intersection of Posey Rd. and Anapra Rd.		
<b>Estimated length of segments proposed for reclassification:</b> (to the nearest thousandth of a mile)	7.27 miles		
<b>Reason for requested change:</b>	Proposed roadway that will improve the connection between the Santa Teresa Port of Entry on NM 136 to the City of Sunland Park and beyond regional destinations.		
	Land Use Along Route: Primarily Vacant/Undeveloped	Characteristics of Traffic Served: The highway would provide more direct access route to US/Mexico border crossings, truck and other through traffic.	
<b>Ownership and Maintenance</b> (responsible entity)	Ownership: New Mexico Border Authority (NMBA) New Mexico Department of Transportation (NMDOT)	Maintenance: New Mexico Border Authority (NMBA) New Mexico Department of Transportation (NMDOT)	
<b>Traffic Count &amp; Traffic Year</b>	Traffic Count: Forecast Traffic: 966	Traffic Year: Forecast Yr: 2032 from Traffic Analysis for Highway Design	







## Functional Classification Change Request

### Classification Category

- Interstate
- Minor Collectors
- Major Collectors
- Minor Arterial
- Principal Arterial
- Freeways and Expressways

- - - - Proposed Classification Change Minor Collector
- - - - Proposed Classification Change Major Collector
- - - - Proposed Classification Change Minor Arterial
- - - - Proposed Classification Change Principal Arterial
- - - - Proposed Classification Change Expressways
- Existing Major Thoroughfare

- MPO Boundary 2015
- 2010 Adjusted Urbanized Area
- Fort Bliss

